

BEAVER ELECTRIC WINCHES



Beaver Pull Lift Winch

➤ **Power transmission**

Power transmission from the motor to the gearbox is via a direct coupling, to ensure low power loss and accurate speed control.

➤ **Brake**

The unique braking system is designed for both static and dynamic loading. Large friction area brake discs for greater efficiency will automatically apply in the event of power loss. Our design means no adjustment of the brake is necessary.

➤ **Gearbox**

The gearbox housing is a one piece casting, machined and treated to ensure maximum durability and resistance to wear.

➤ **Planetary Gears**

The design is compact for better load sharing whilst at the same time helping to reduce the winches overall weight. The gears are machined to guarantee that they mesh at full depth providing long life and reducing the operating noise.

➤ **Main drive gear**

The main input gear is manufactured from a solid billet of steel for maximum strength and increased life.

➤ **Ball bearings**

Sealed grease filled bearings fitted are lubricated for the life of the bearing, also reducing the risk of down time.

➤ **Electric Motor**

Introduction type motor fitted for increased life, efficient operation and low noise output.

➤ **Wire Rope Connection**

The connection of the wire rope to the winch drum is via set screw, to ensure rope retention.



Beaver Electric Winches 240v 50Hz (Single Phase models)

Robust Construction Suitable for Building Sites, Slipways & Industrial Use c/w 24 Volt IP65 Pendant Control with emergency stop

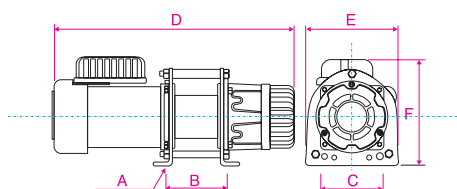
Product Code	Rated Capacity (kg)	Speed m/min	Motor Power HP	% ED	Effective Pull Height m	Wire Rope Dia. x Length mm	A	B mm	C mm	D mm	E mm	F mm	Weight Each (kg)
BPL1020	200	10-15	0.8	25	29	6 x 30	4 x 10.5 Φ	142	142	510	210	246	36
BPL1025	250	10-15	1.0	25	29	6 x 30	4 x 10.5 Φ	142	142	525	210	246	40
BPL1030	300	10-15	1.5	25	29	7 x 30	4 x 10.5 Φ	172	142	540	210	246	49

Beaver Electric Winches 415v 50Hz (Three Phase models)

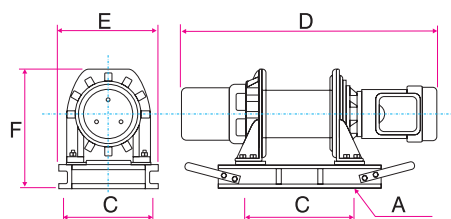
Robust Construction Suitable for Building Sites, Slipways & Industrial Use. c/w 24 Volt IP65 Pendant Control with emergency stop

Product Code	Rated Capacity (kg)	Speed m/min	Motor Power HP	% ED	Effective Pull Height m	Wire Rope Dia. x Length mm	A	B mm	C mm	D mm	E mm	F mm	Weight Each (kg)
BPL3030	300	10-15	1.5	25	29	7 x 30	4 x 10.5 Φ	172	142	548	210	246	48
BPL3050	500	12-18	2.5	25	58	9 x 60	4 x 10.5 Φ	400	330	922	372	430	136
BPL3075	750	12-18	3.5	25	58	9 x 60	4 x 10.5 Φ	400	330	935	372	430	149
BPL3100	1000	12-18	5.0	25	58	11 x 60	4 x 10.5 Φ	400	330	935	372	430	156
BPL3220	2200	7-12.5	7.5	25	97	16 x 100	4 x 12 Φ	600	499	1160	565	658	450

Single Phase Model



Three Phase Model

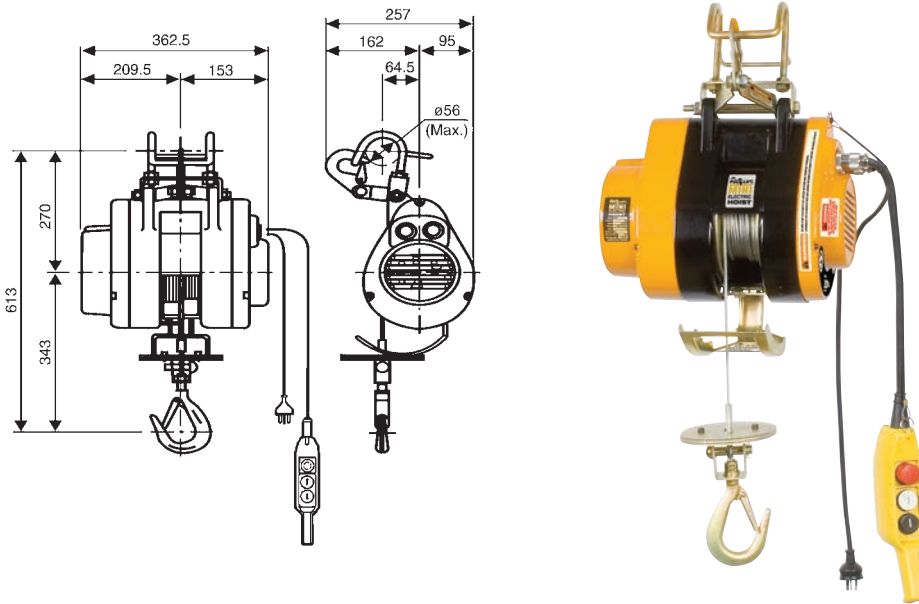


BEAVER ELECTRIC WINCHES (CONT'D)

Beaver Electric Mini Hoist 240v 50Hz (Single Phase model)

Robust Construction Suitable for Building Sites

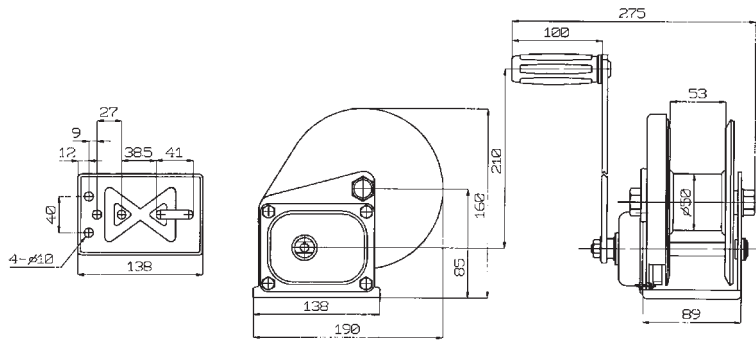
Product Code	Rated Capacity (kg)	Speed m/min	Lifting Height Size m	Hoist Motor Single Phase						
				Motor Power HP	Input Power Watts	% ED	Rope Dia. mm	Rope Construction	Grade of Rope	Weight Each (kg)
BMI1015	150	15	20	N/A	780	25	3.8	7 x 19	G1960min	28
BMI1025	250	12	20	N/A	1200	25	5.1	7 x 19	G1960min	30



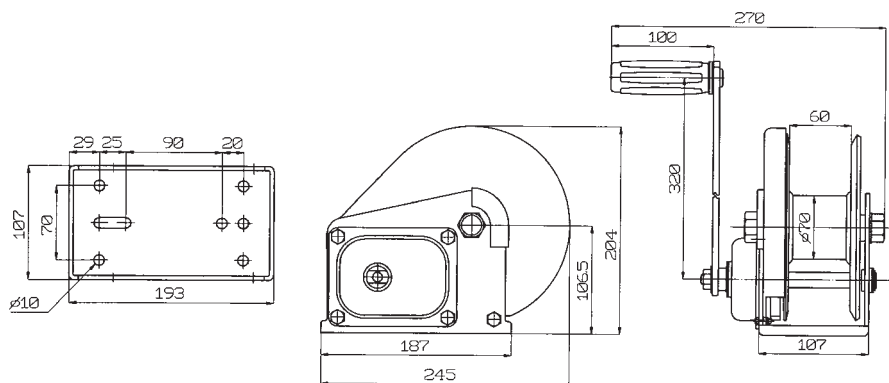
BEAVER BRAKE HAND WINCHES

Model No. - Bare	BHW1200	BHW1800	BHW2600	Handle Length (mm)	210	320	320
Model No. - Wire Rope	BHW1200R	BHW1800R	BHW2600R	Unit Weight - Bare (kg)	3.8	8	10.3
Rated Capacity - Pulling (kg) (kN)	545 (5.33)	820 (8.04)	1200 (11.76)	Wire Rope Diameter (mm)	Ø5	Ø7	Ø8
Rated Capacity - Hoisting (kg)	270	410	600	Wire Rope Construction	6x19 (FC) RHL	6x19 (FC) RHL	6x10 (FC) RHL
Type of Brake	Single Pawl	Double Pawl	Double Pawl	Grade of Wire Rope	G1770	G1770	G1770
Max. Hand Force Req. (kg)	15	22	19	Wire Rope Finish	HDG	HDG	HDG
Gear Ratio	4:1:1	5:1	10:1	Wire Rope Storage Capacity (mm)	24	26	18
Hub Diameter (mm)	Ø50	Ø70	Ø80	Std Wire Rope Length Supplied (mm)	10	10	10

BHW1200



BHW1800



BHW2600

